

## Interim

**\$31.00 per Sq/M incl GST**

Excludes installation and underlay

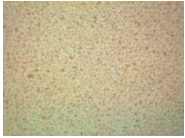
**Cybernetics**



**Cycle**



**Darling**



**Eaves**



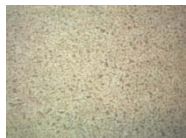
**Haphazard**



**Jangle**



**Loudspeaker**



### Specifications

<b>Fibre Type:</b>	50% Wool 50% Poly
<b>Construction:</b>	Twist Pile
<b>Total Pile Weight:</b>	Not Applicable
<b>Pile Height:</b>	Not Applicable
<b>Backing:</b>	Jute
<b>Width:</b>	3.66 metres (12')
<b>Area of Use:</b>	Residential Heavy Duty
<b>Warranty:</b>	7 Years